

Revolução e Democracia

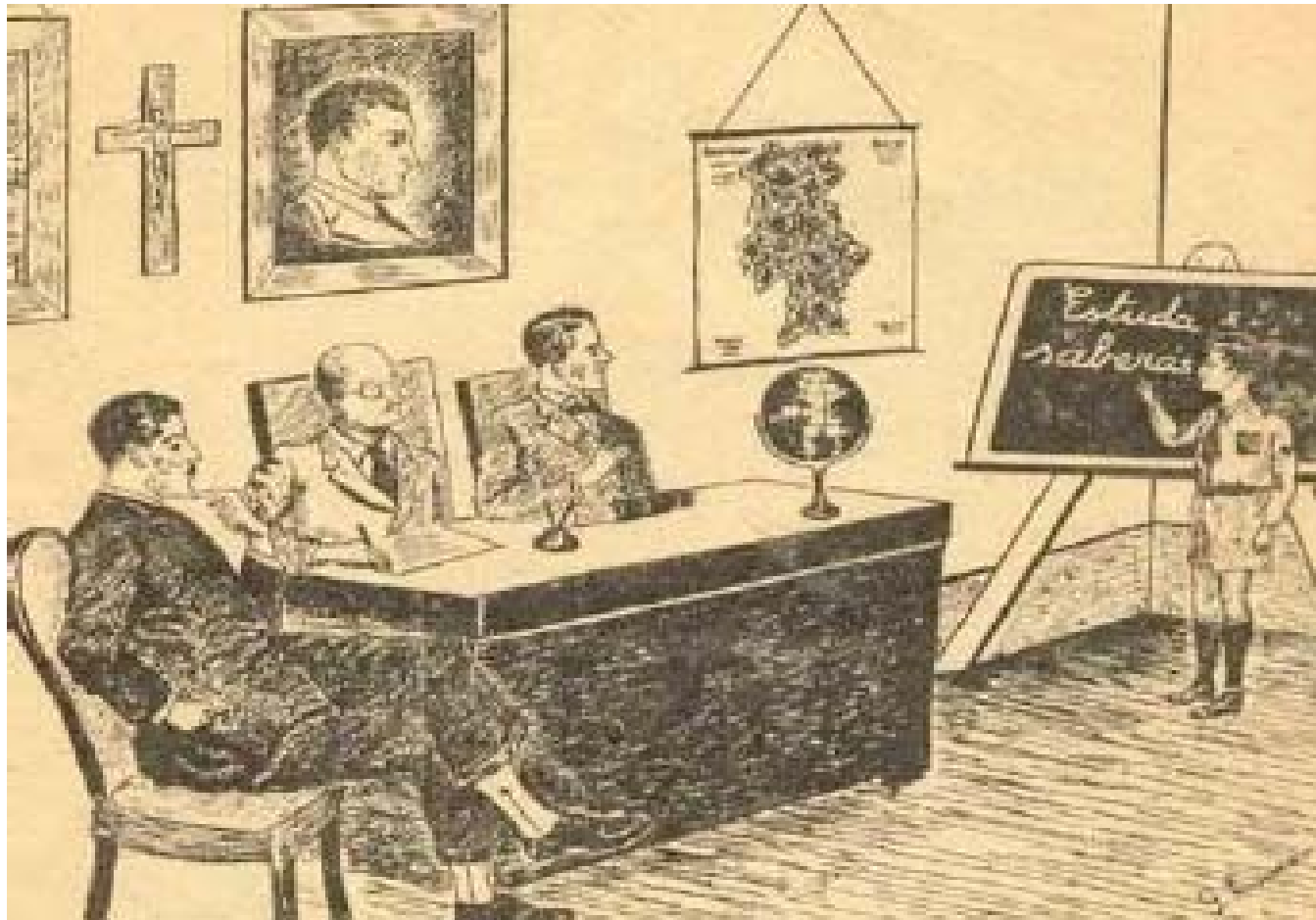
40 Anos do 25 de Abril

Faculdade de Ciências Sociais e Humanas

Universidade Nova de Lisboa

Alberto Amaral

A3ES e CIPES



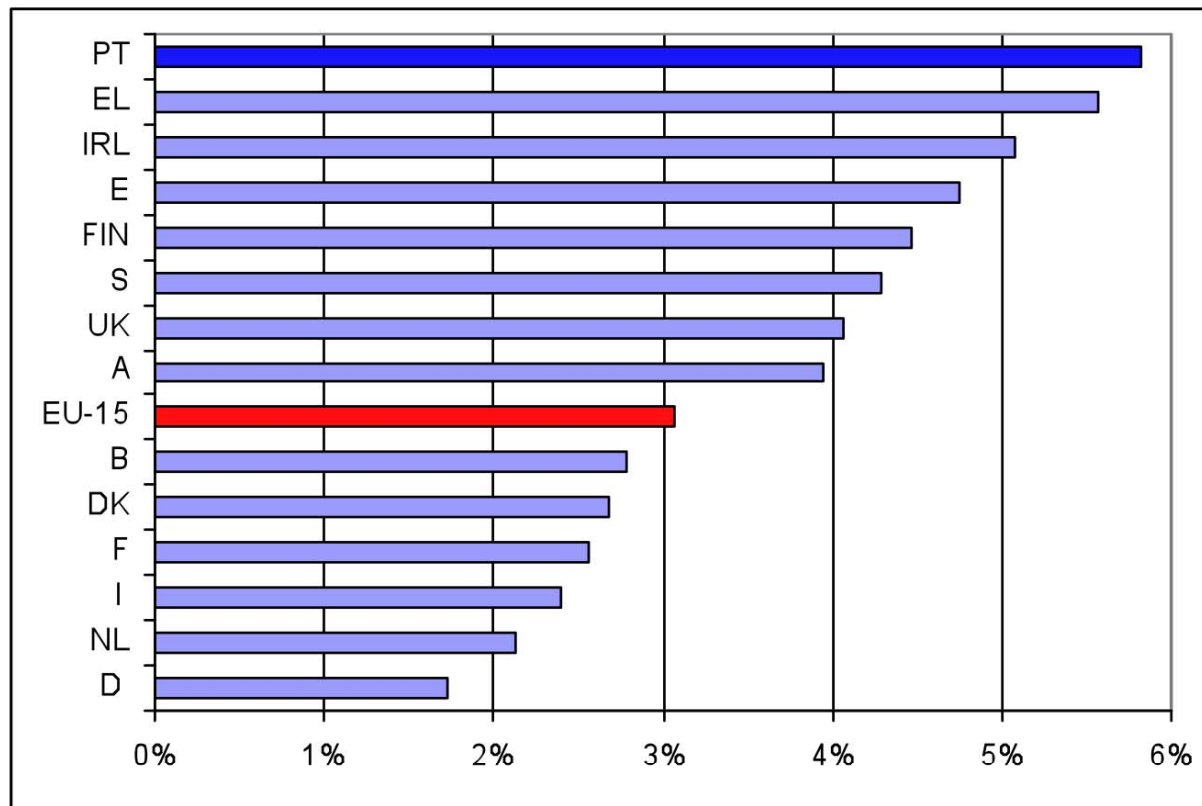


Figure 1.3. Compound annual growth rate of the number of students enrolled in tertiary education (ISCED 5 and 6), 1975/76 – 2000/01

Source: Eurydice (2005), Key data on Education in Europe 2005, Luxembourg, Office for Official Publications of the European Communities

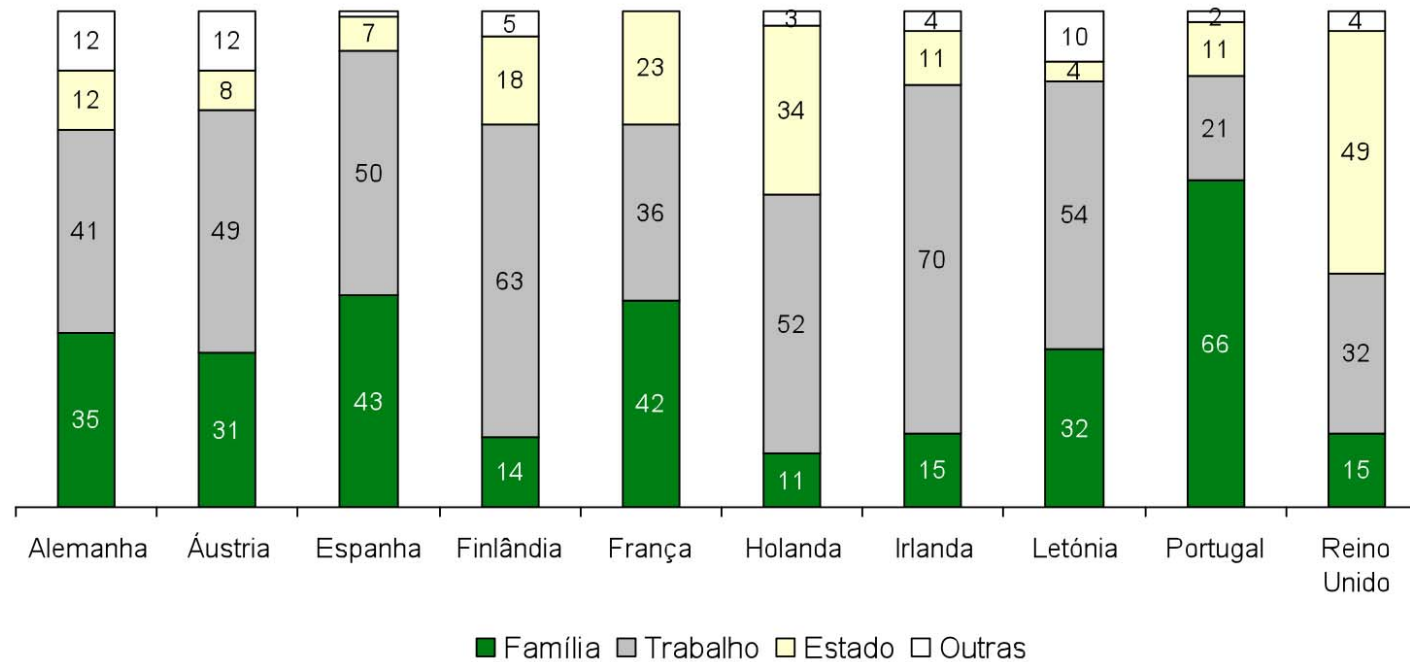


Figure 1.8. Relative level of the sources of income for students staying at their parent's house, 2004; Source: CIES-ISCTE, Eurostudent 2005

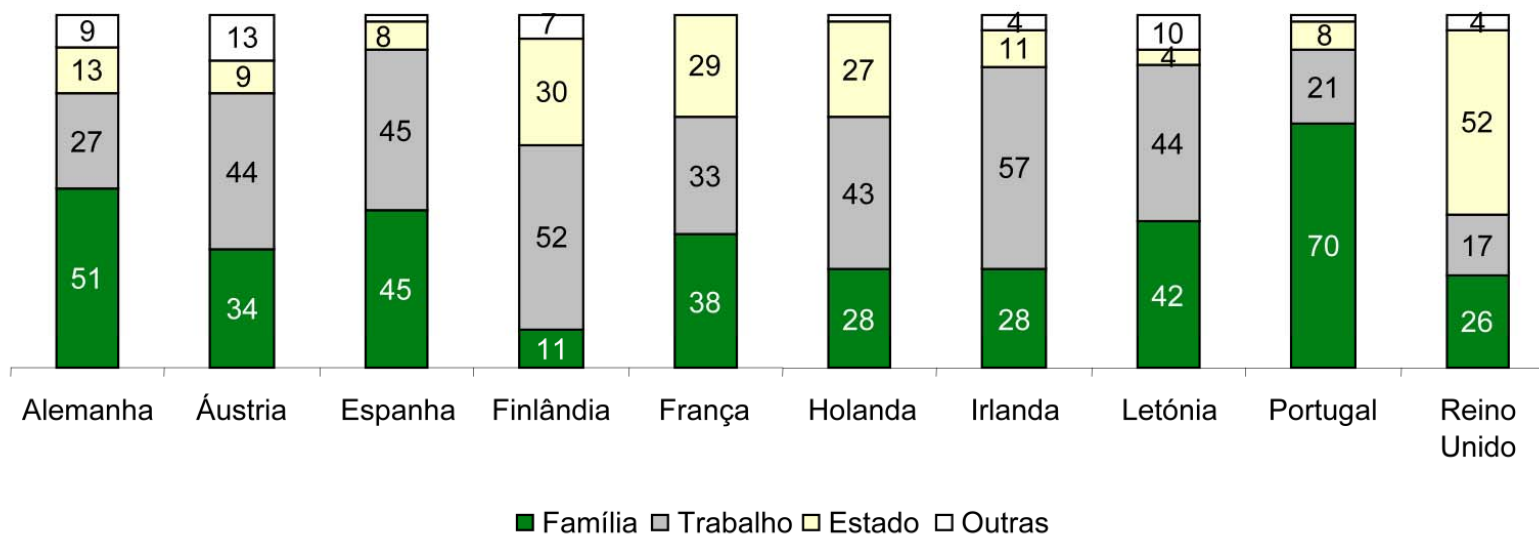


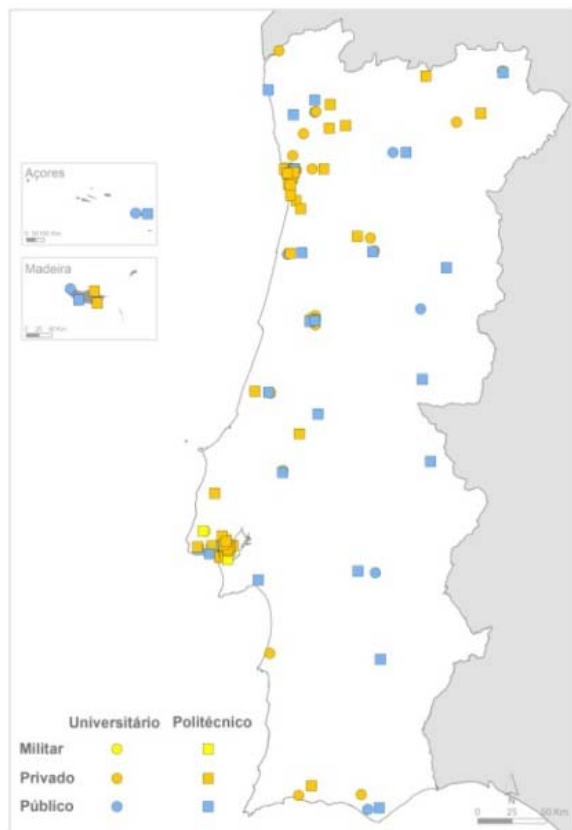
Figure 1.9. Relative level of the sources of income for students that are not staying at their parent's house, 2004; Source: CIES-ISCTE, Eurostudent 2005

Nível de escolaridade da população portuguesa

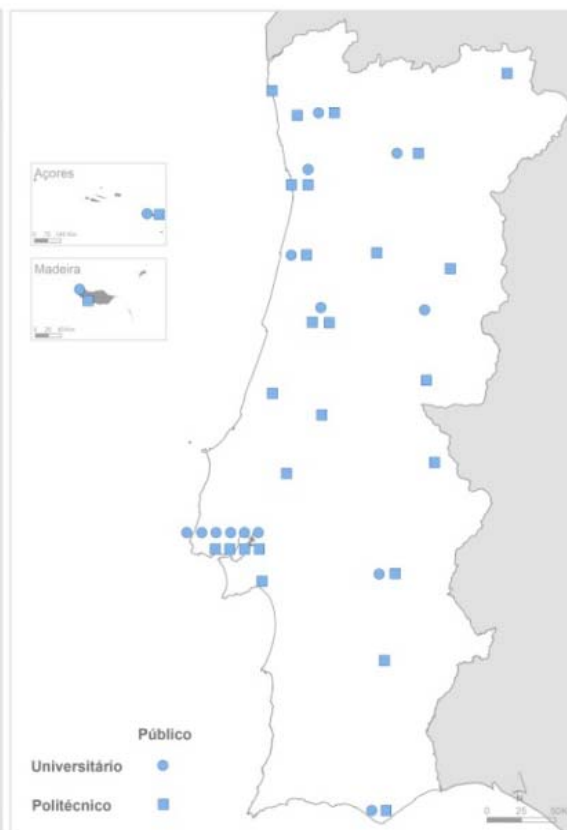
Nível de escolaridade	1991	2001	2011*
Nenhum	34%	26%	19%
Ensino básico 1º ciclo	33%	28%	25%
Ensino básico 2º ciclo	15%	14%	13%
Ensino básico 3º ciclo	8%	14%	16%
Ensino Secundário	7%	11%	13%
Ensino pós-secundário	1%	1%	1%
Ensino superior	3%	7%	12%

* Dados provisórios

Fonte: INE (2011). Census 2011 - resultados provisórios



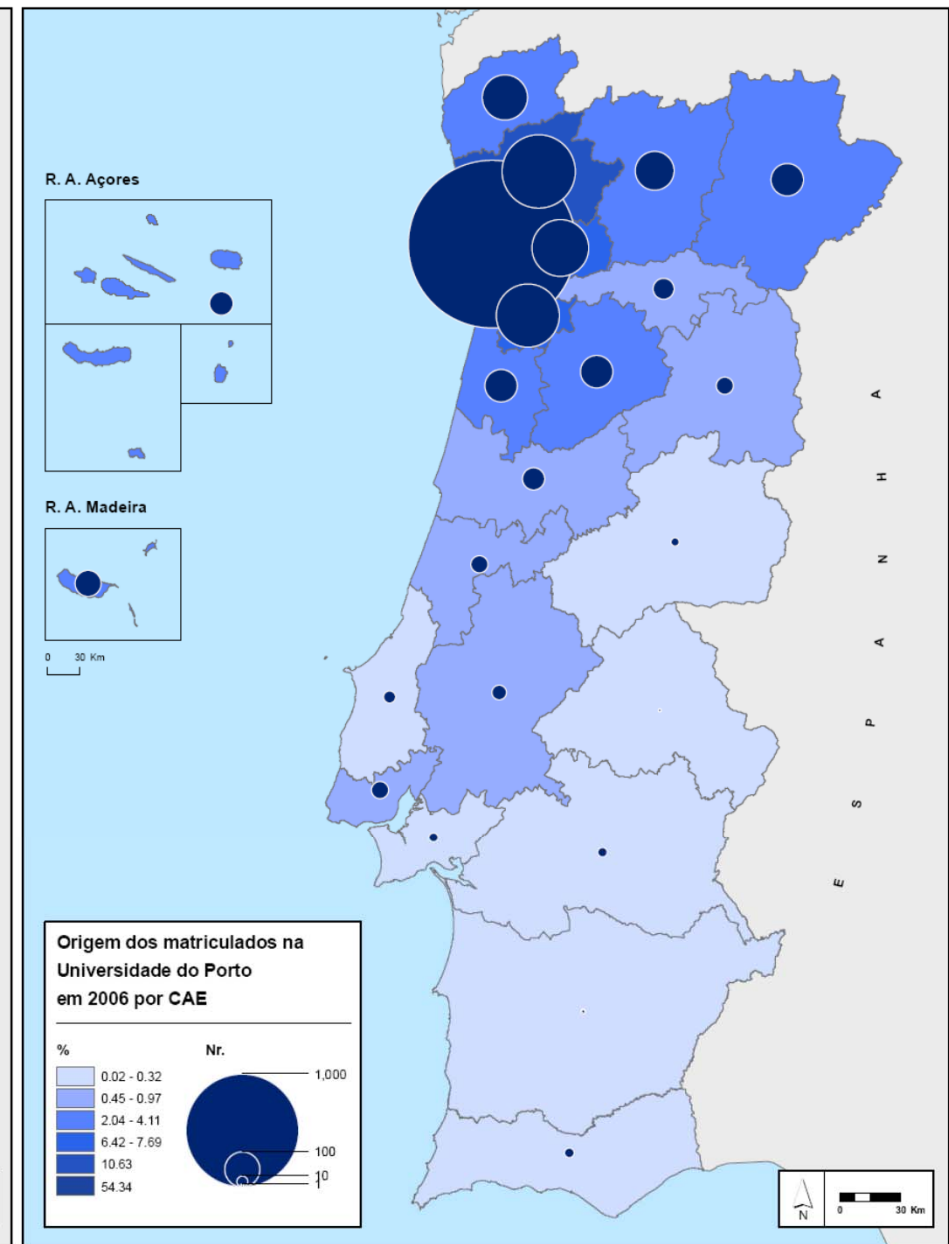
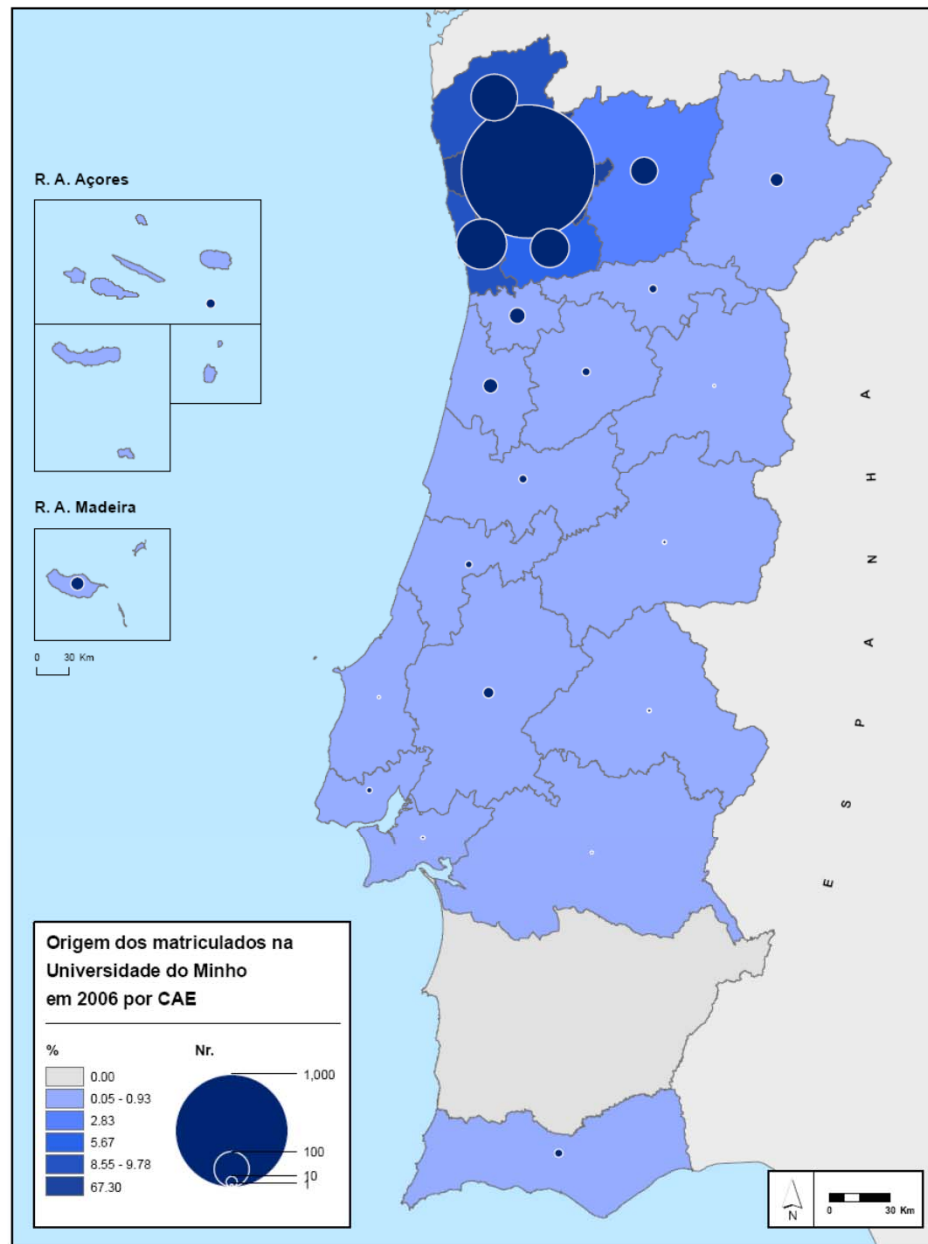
Total

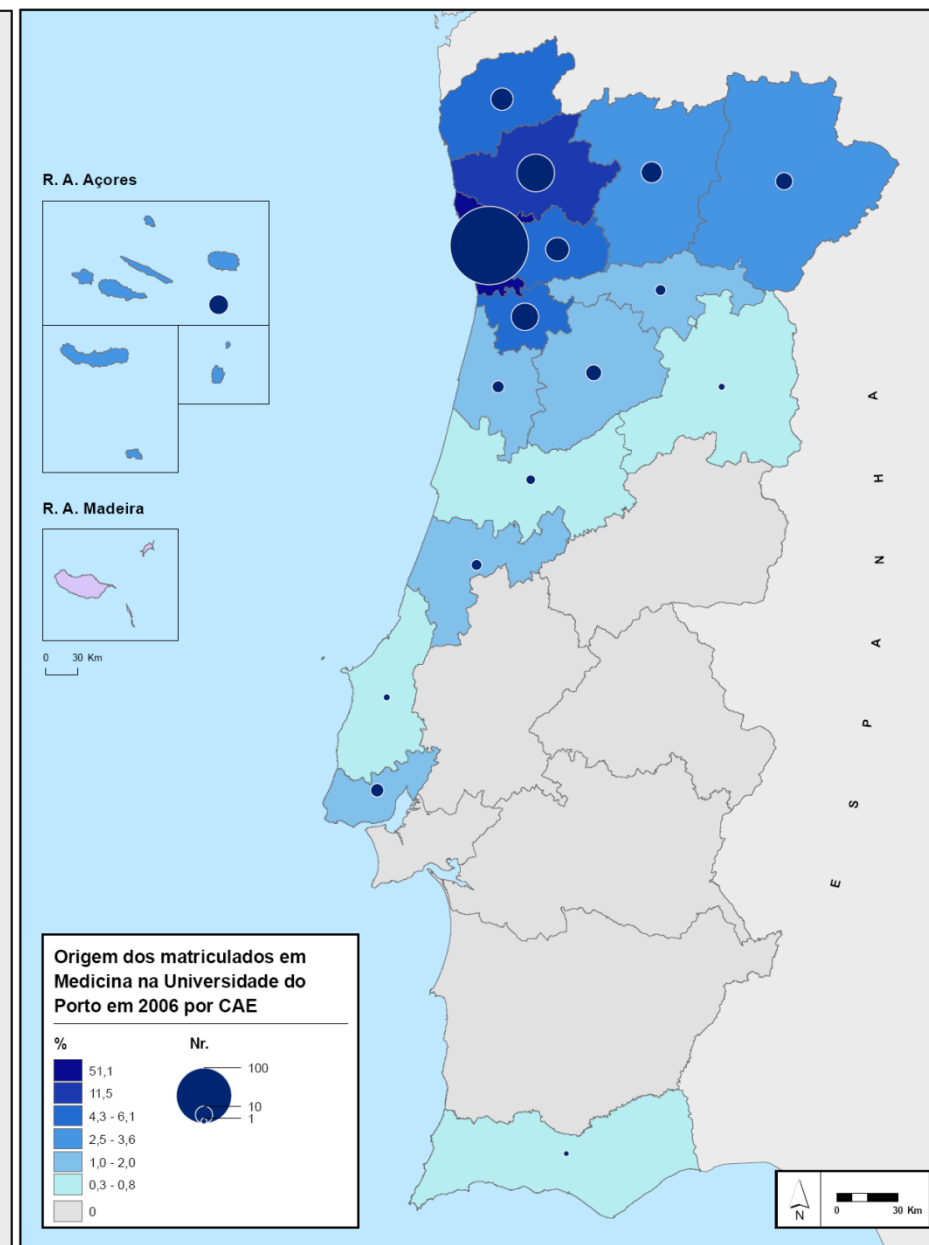
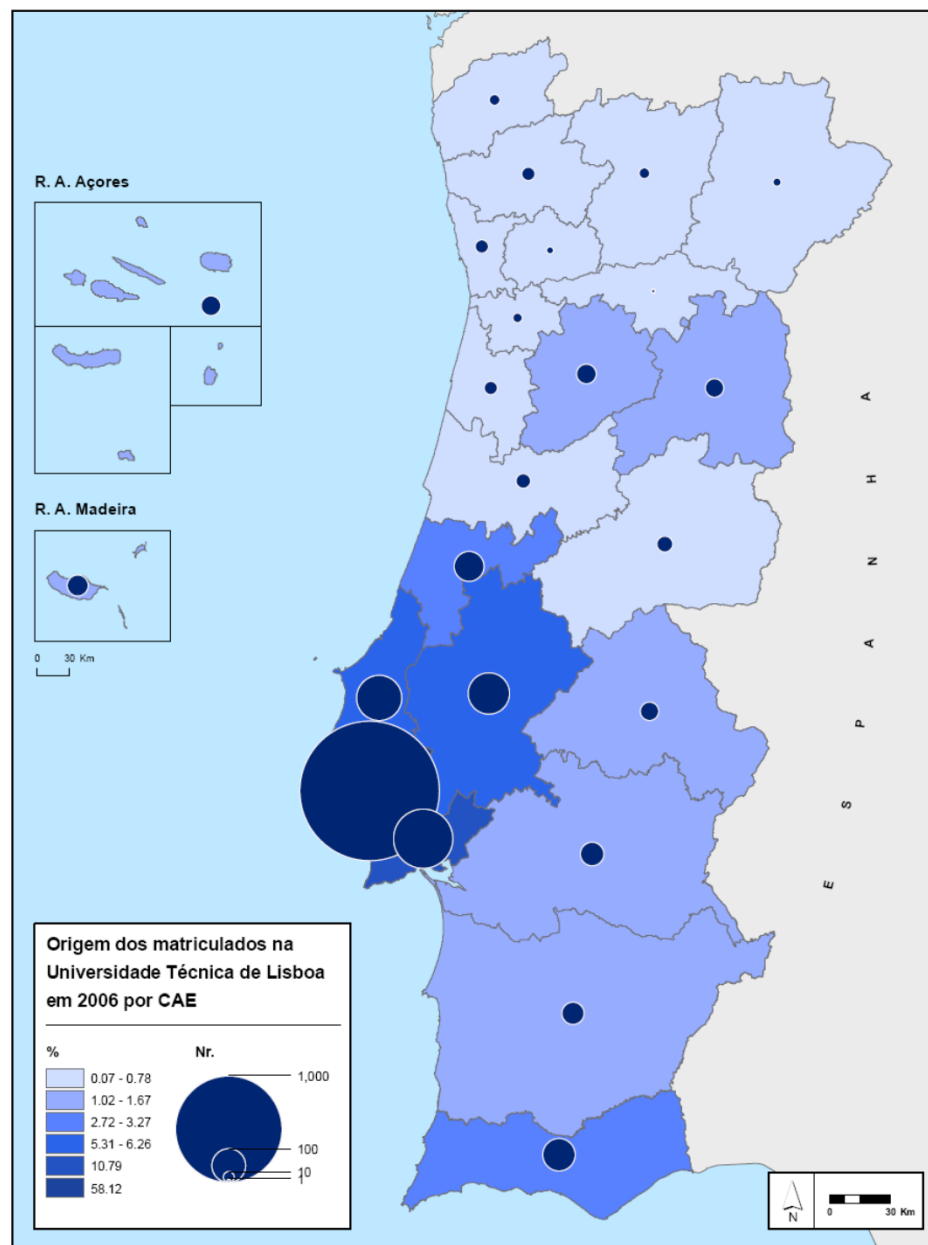


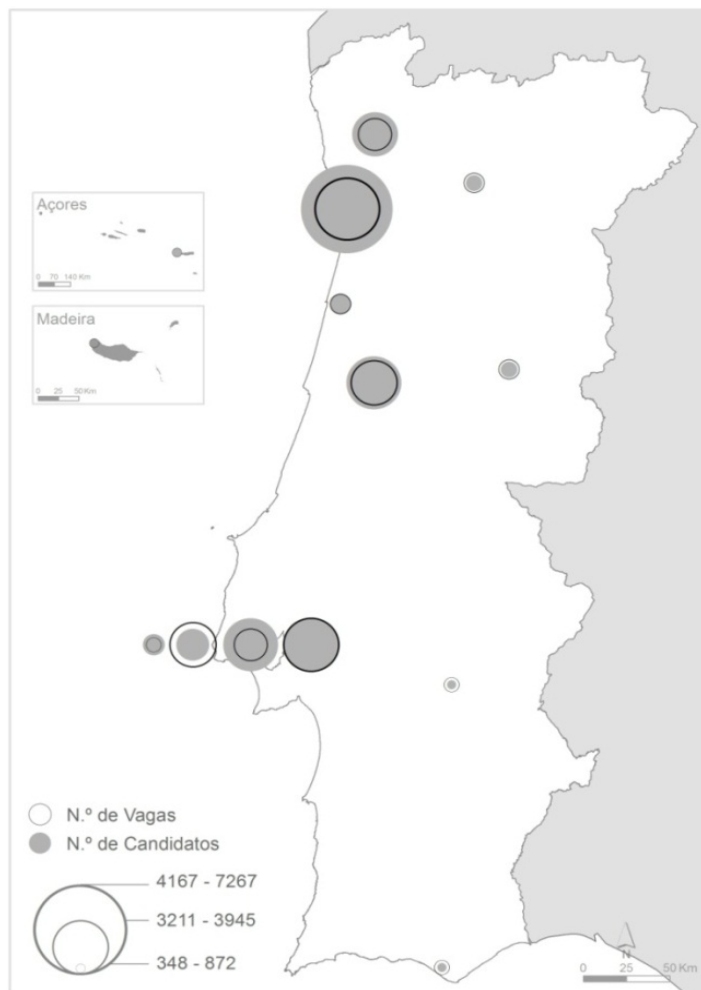
Público



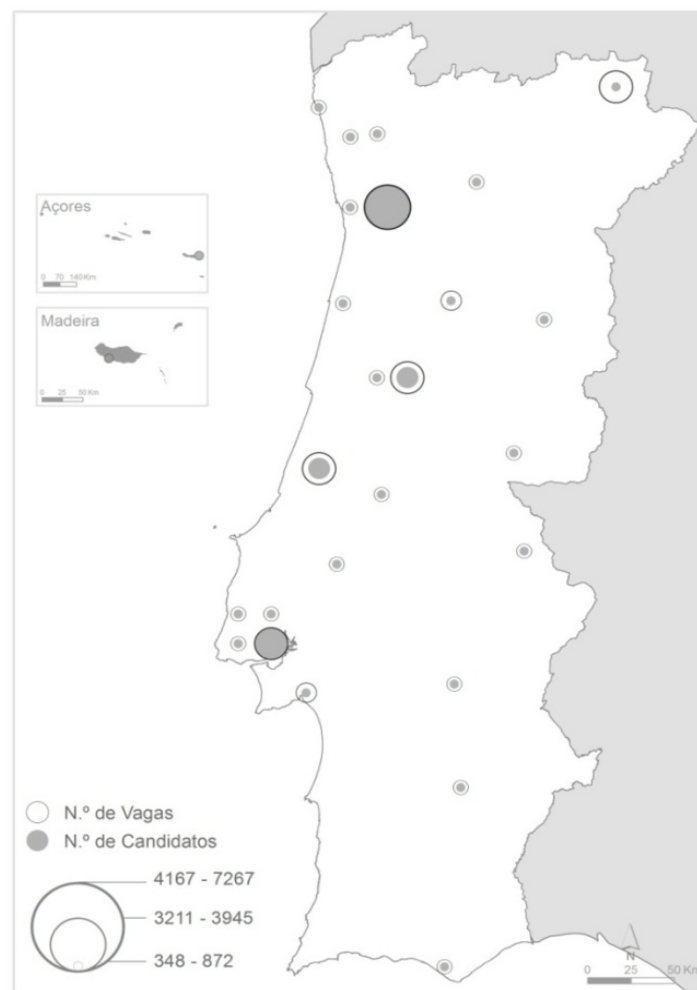
Privado





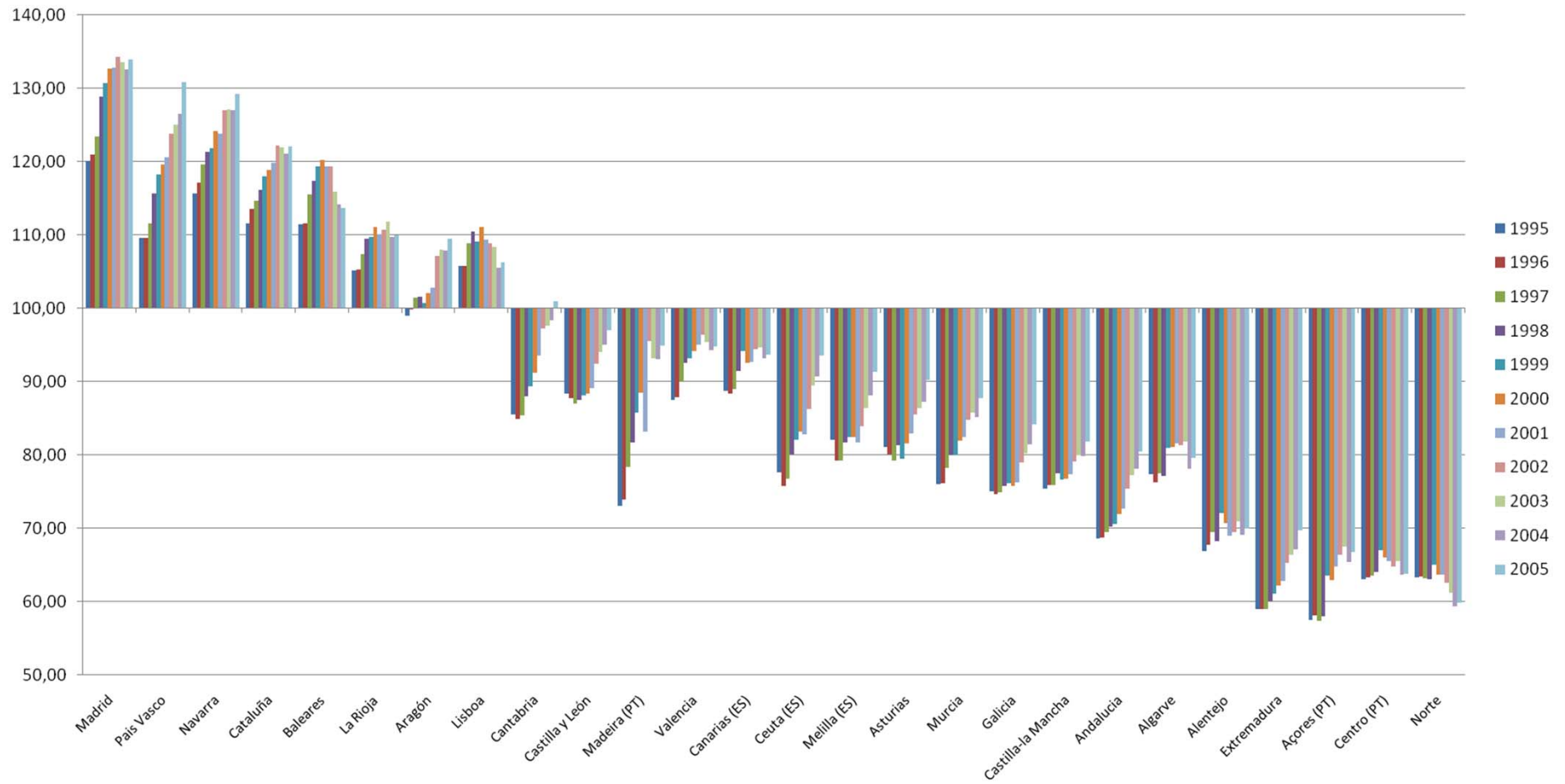


Universidades Públicas



Politécnicos Públicos

GDP/capita % EU27 average

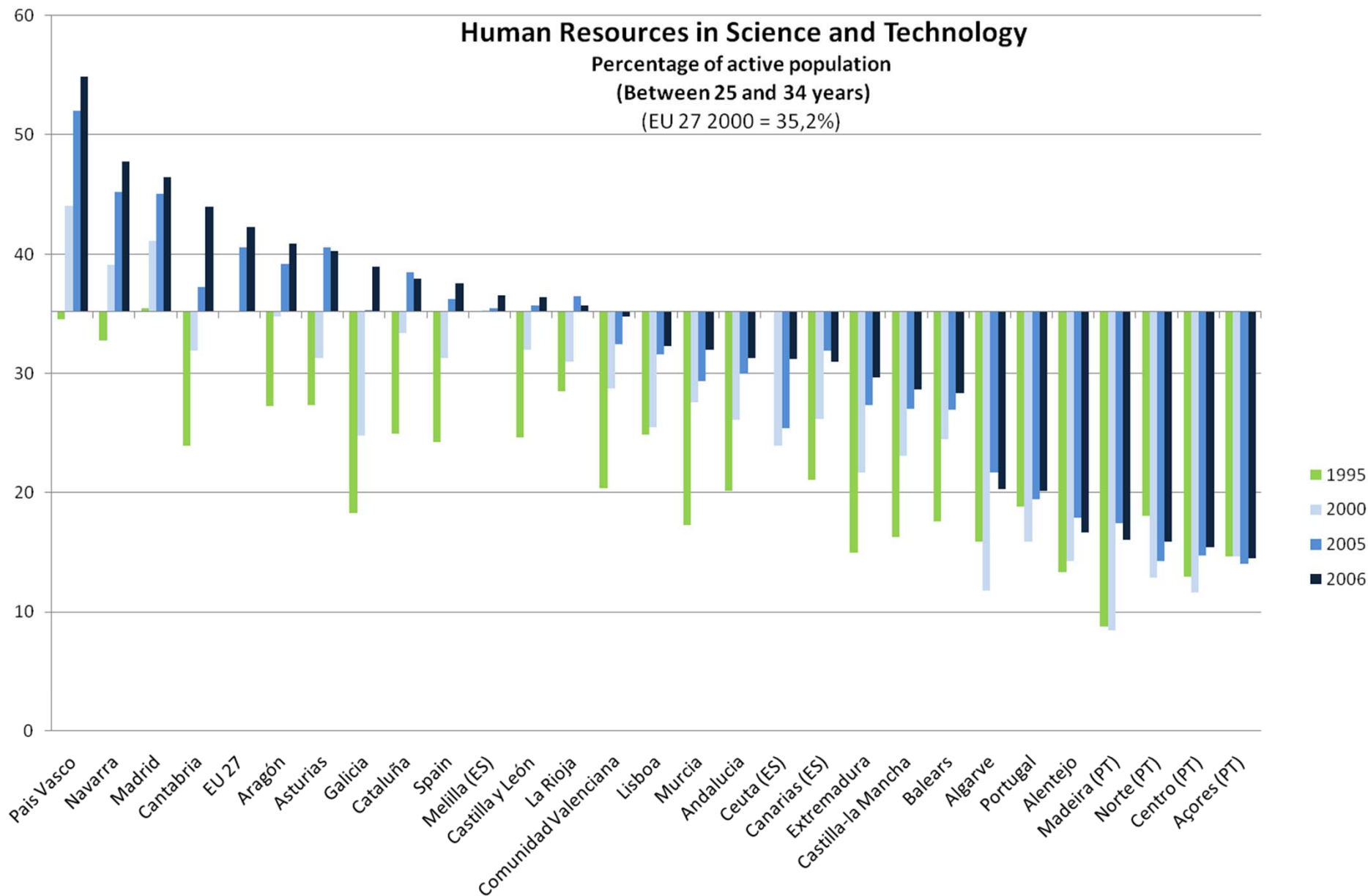


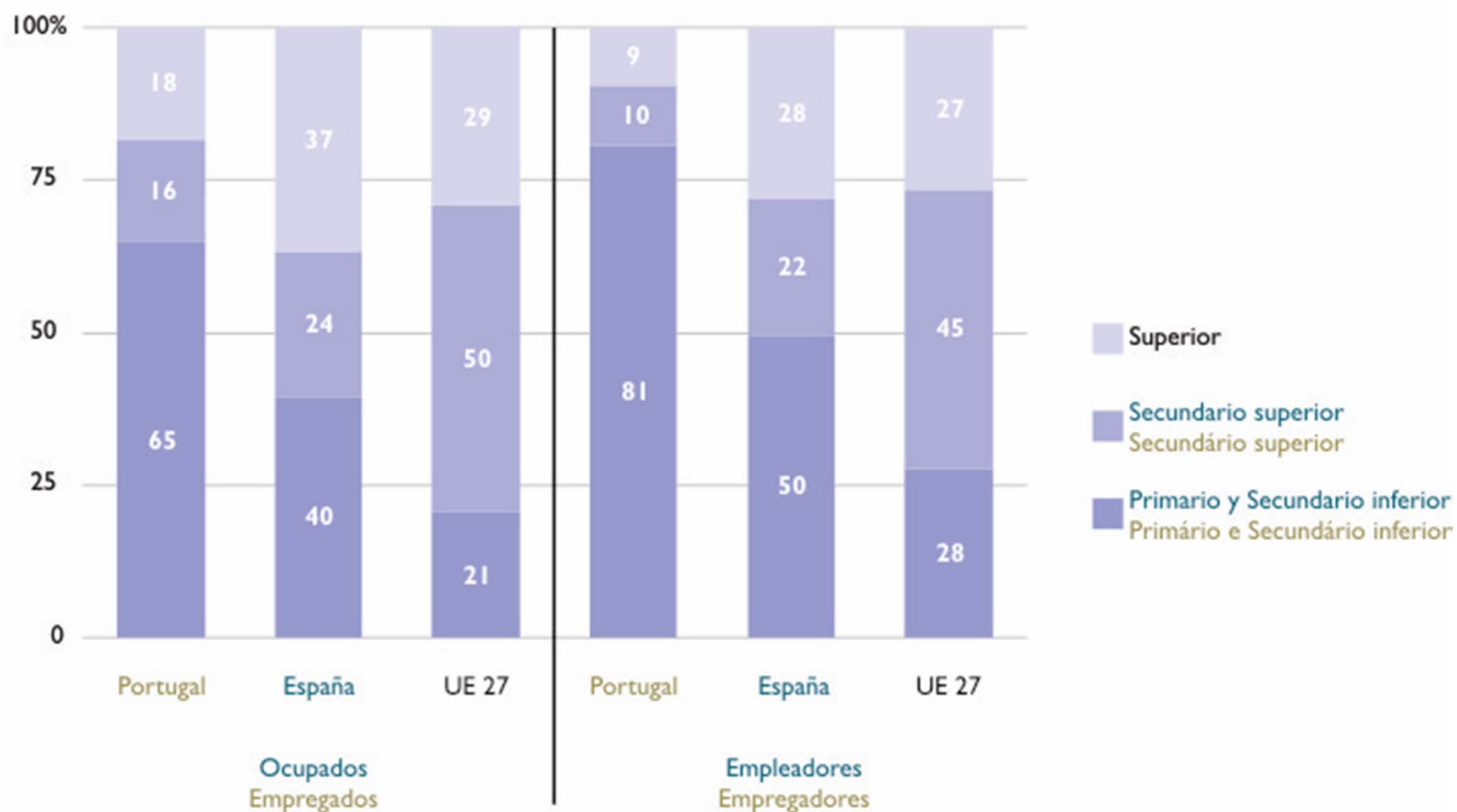
Human Resources in Science and Technology

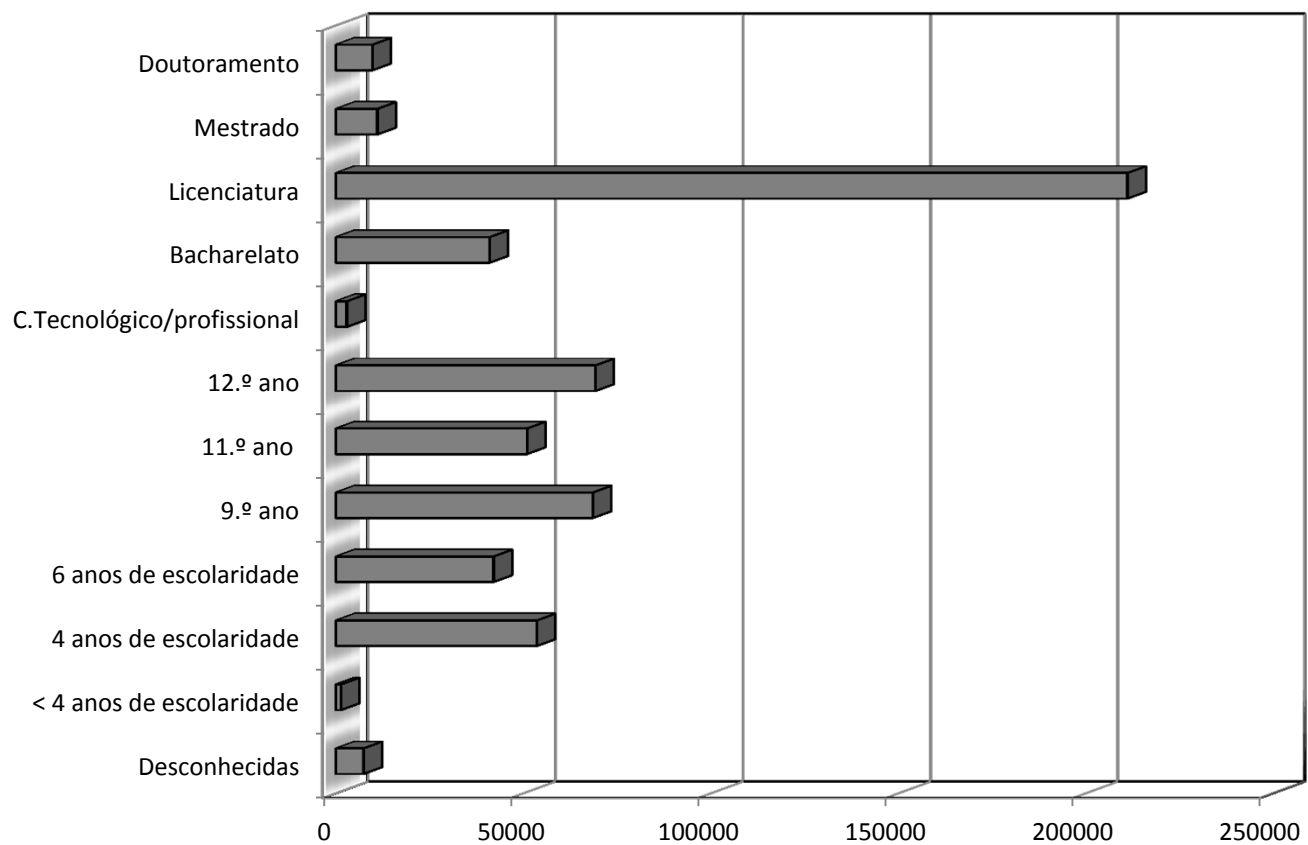
Percentage of active population

(Between 25 and 34 years)

(EU 27 2000 = 35,2%)



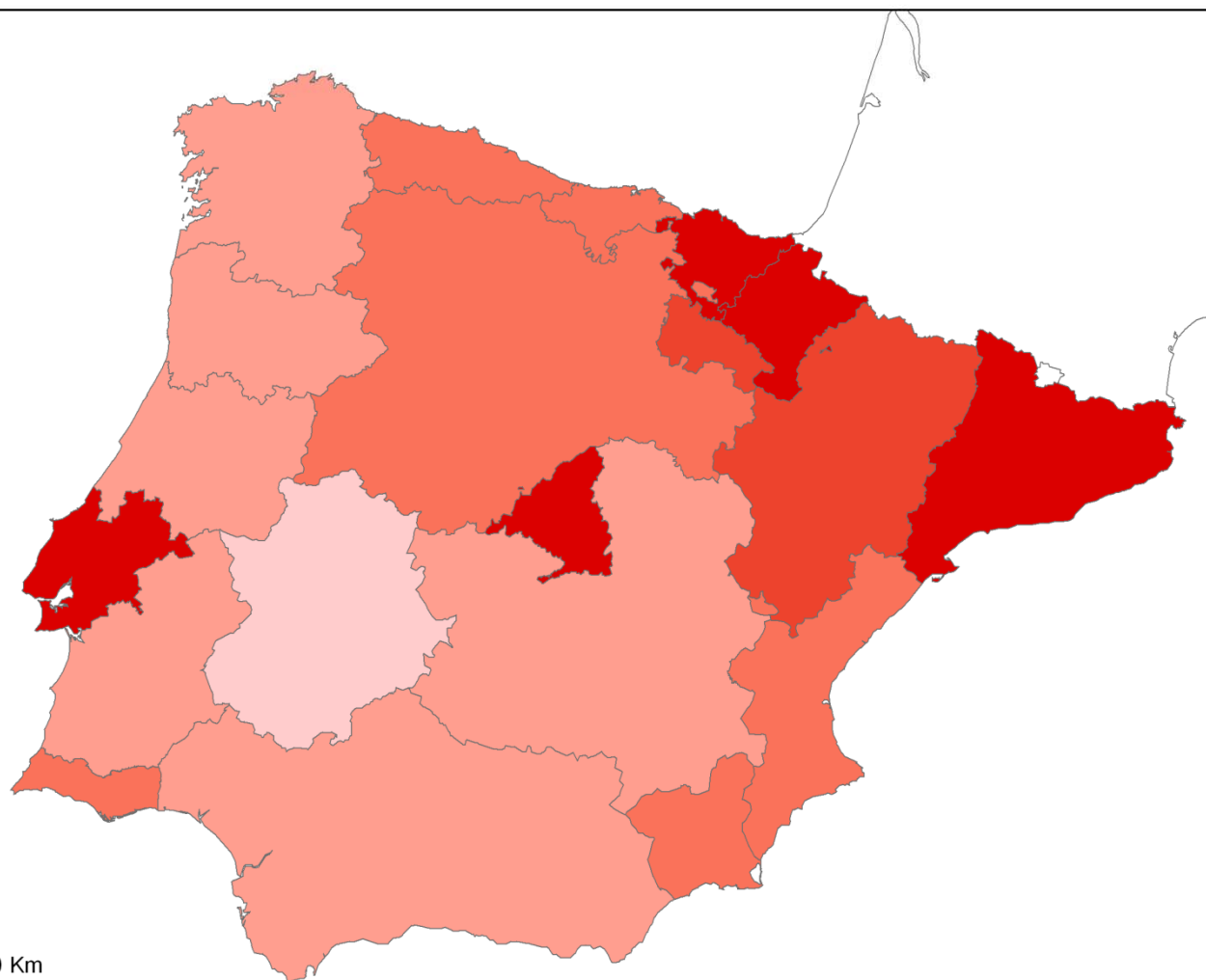




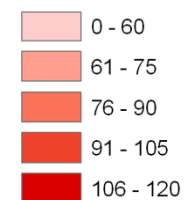
GDP per capita 1995 (EU 27 = 100%)

U.PORTO

FACULDADE DE LETRAS
UNIVERSIDADE DO PORTO



GDP per capita (%)

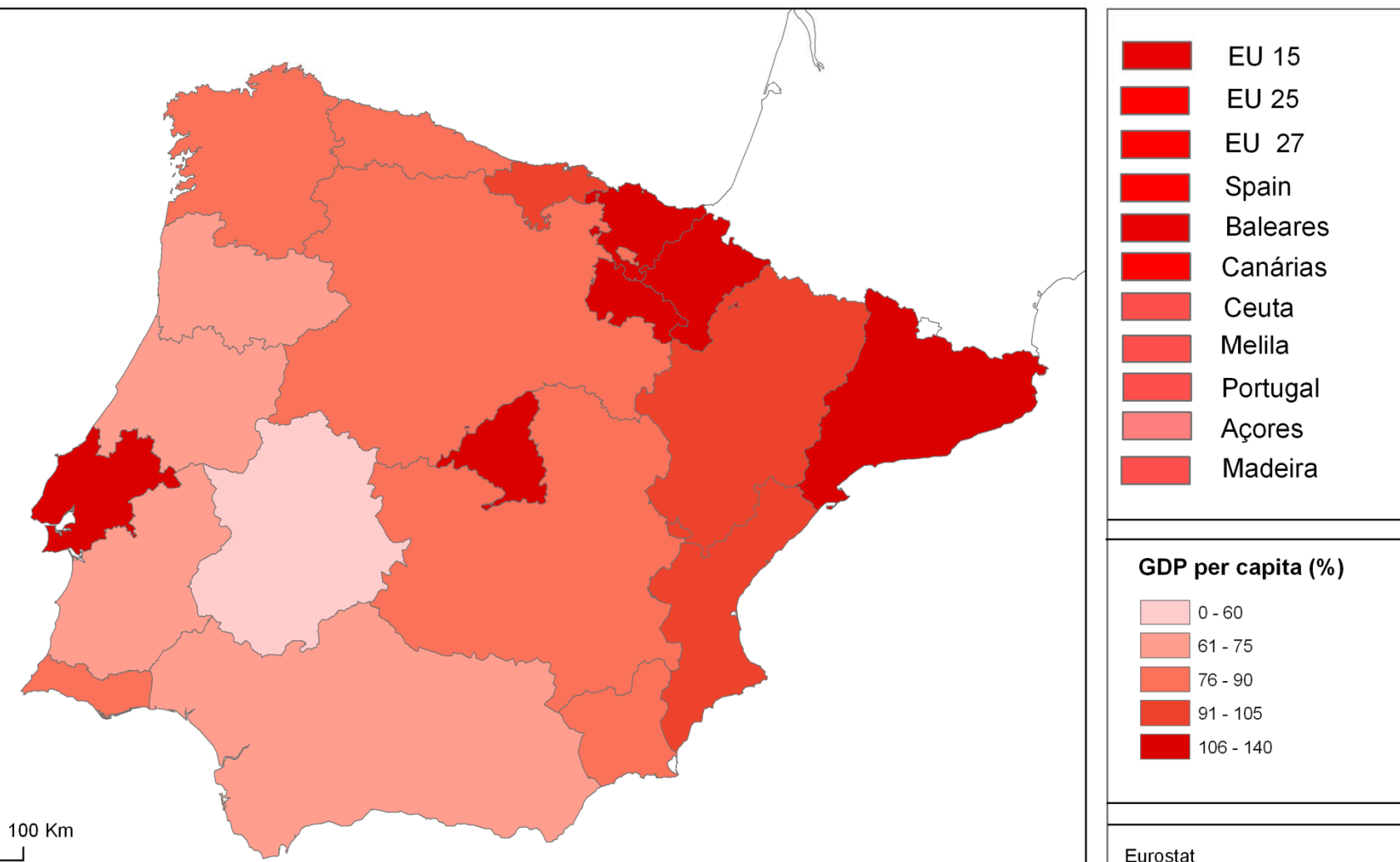


Eurostat

GDP per capita 2000 (EU 27 = 100%)

U.PORTO

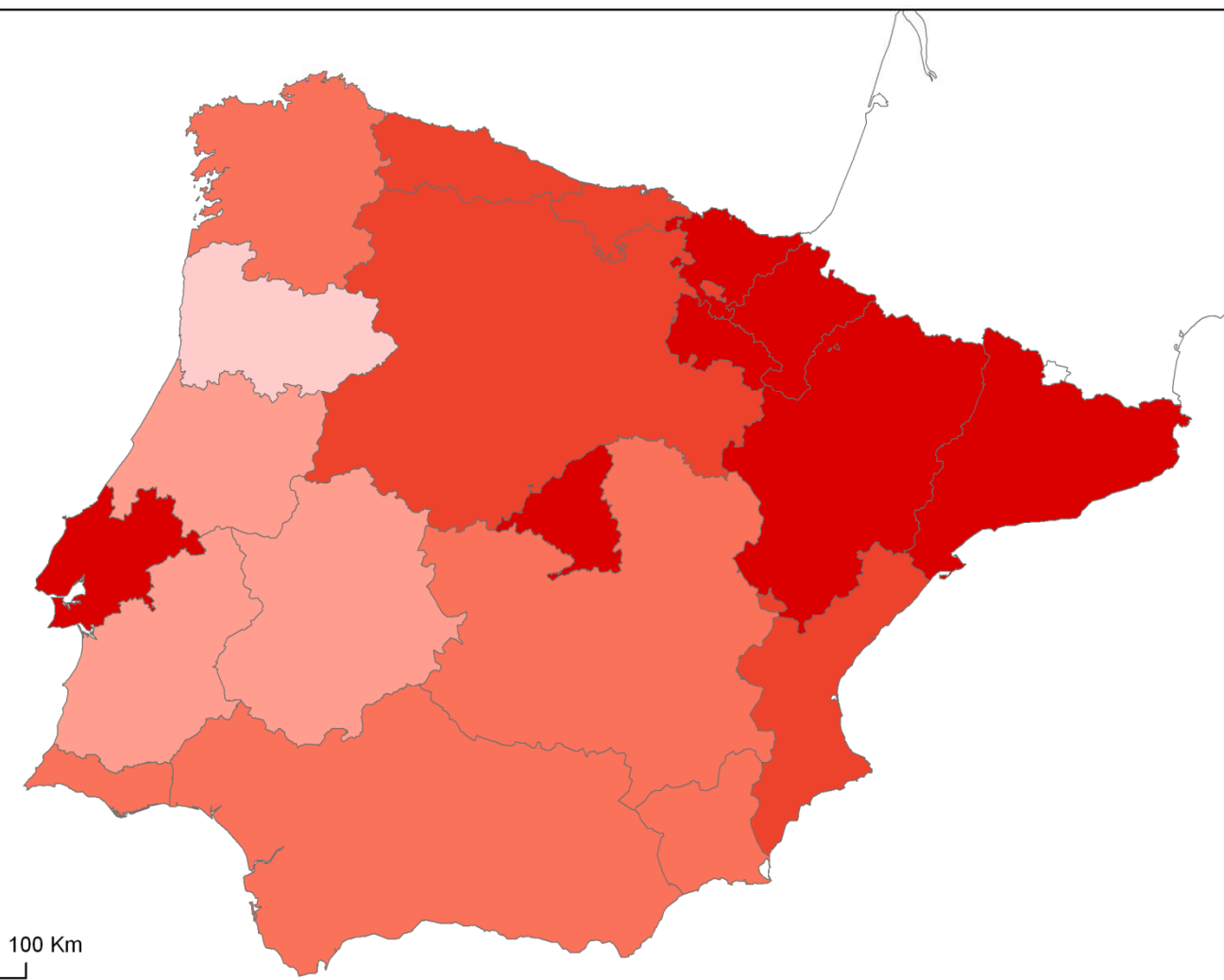
FACULDADE DE LETRAS
UNIVERSIDADE DO PORTO



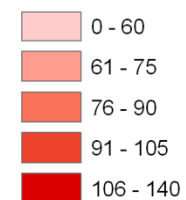
GDP per capita 2005 (EU 27 = 100%)

U.PORTO

FACULDADE DE LETRAS
UNIVERSIDADE DO PORTO



GDP per capita (%)

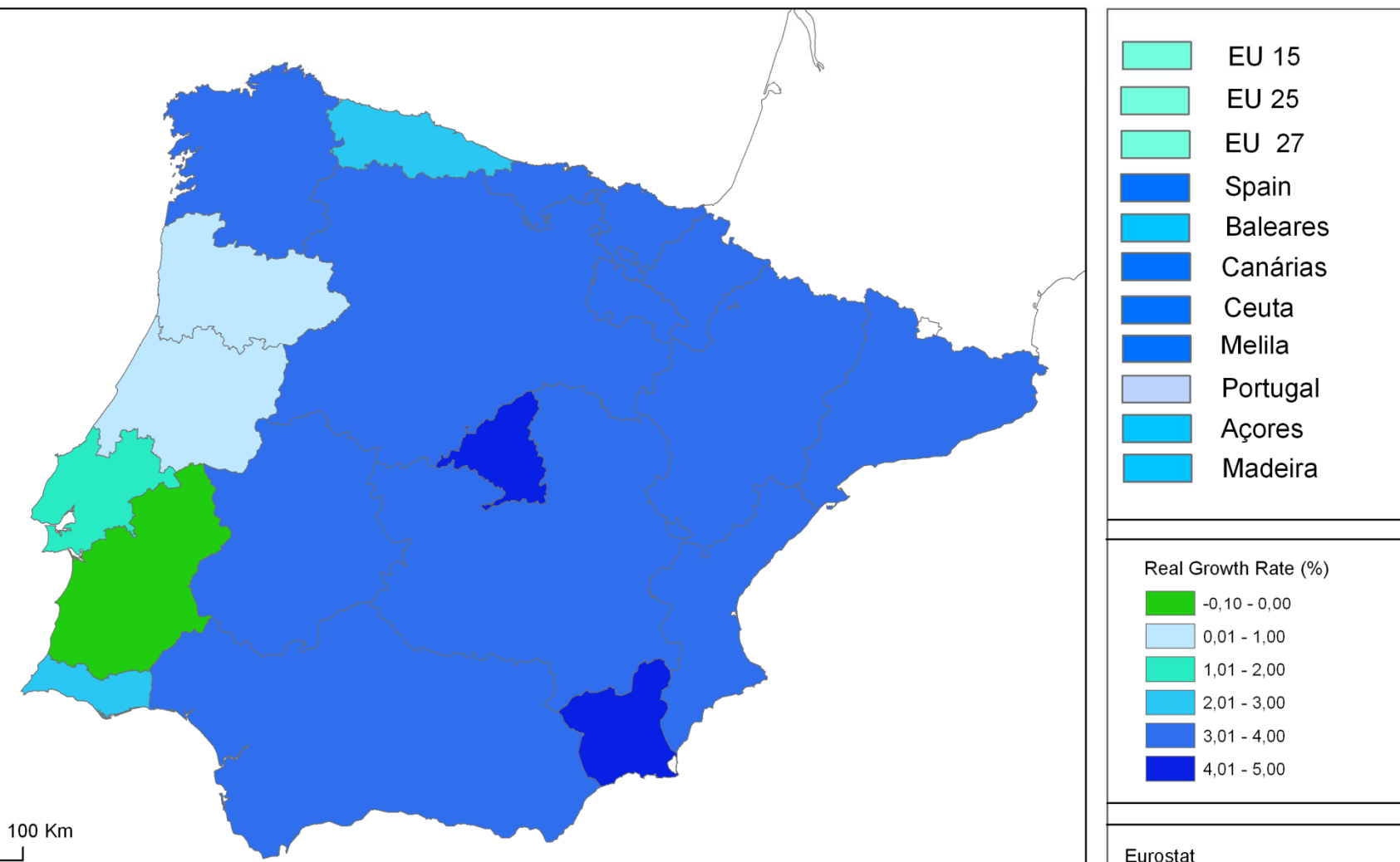


Eurostat

GDP: real growth rate 2005

U.PORTO

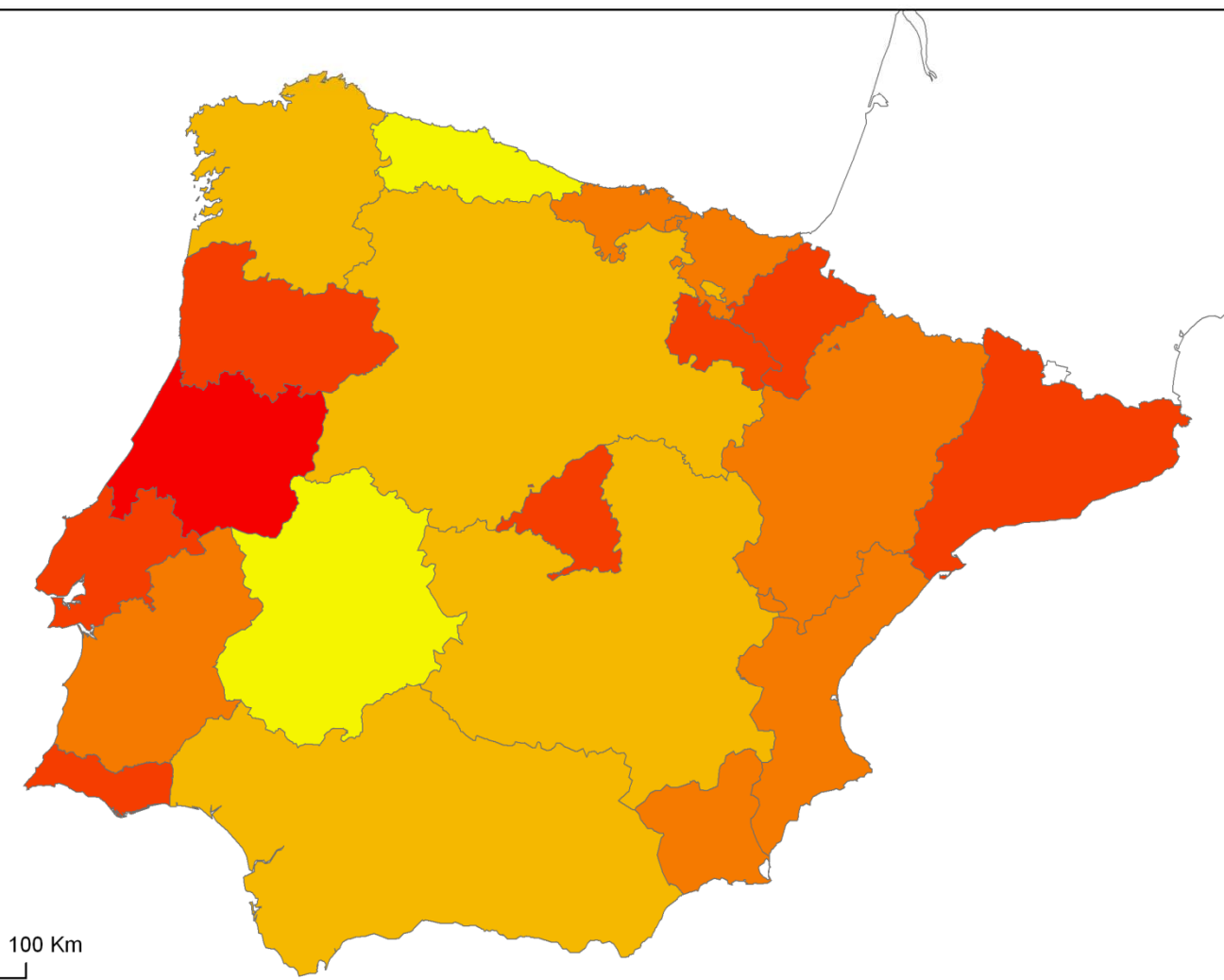
FACULDADE DE LETRAS
UNIVERSIDADE DO PORTO



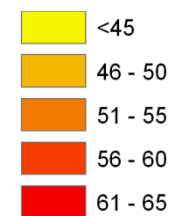
Employment Rate 2006

U.PORTO

FACULDADE DE LETRAS
UNIVERSIDADE DO PORTO



Employment Rate (%)

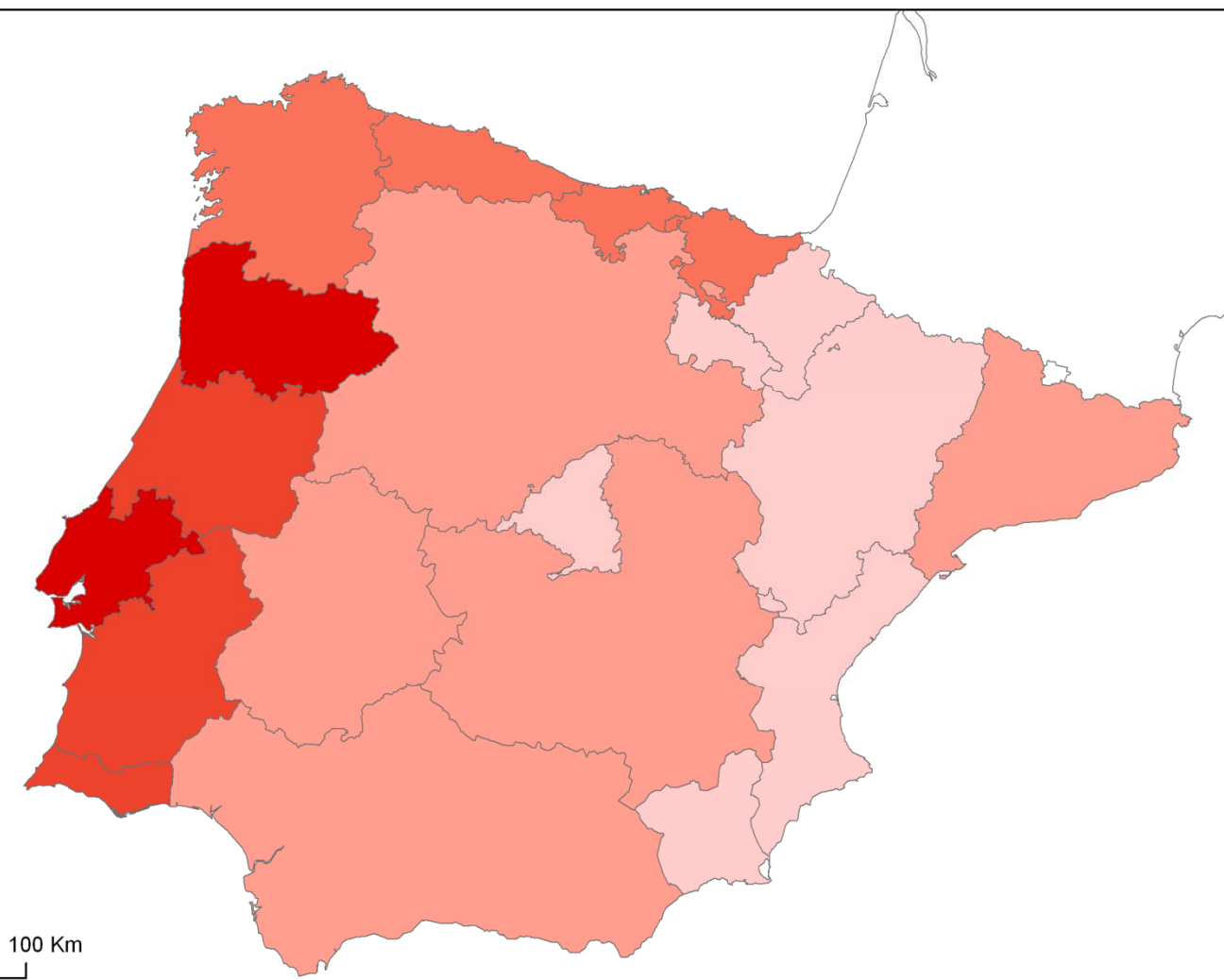


Eurostat

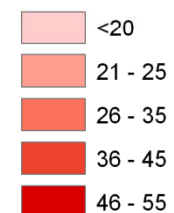
Long-term unemployment rate (on total unemployment) 2006

U.PORTO

FACULDADE DE LETRAS
UNIVERSIDADE DO PORTO



Long-term unemployment rate
(%)

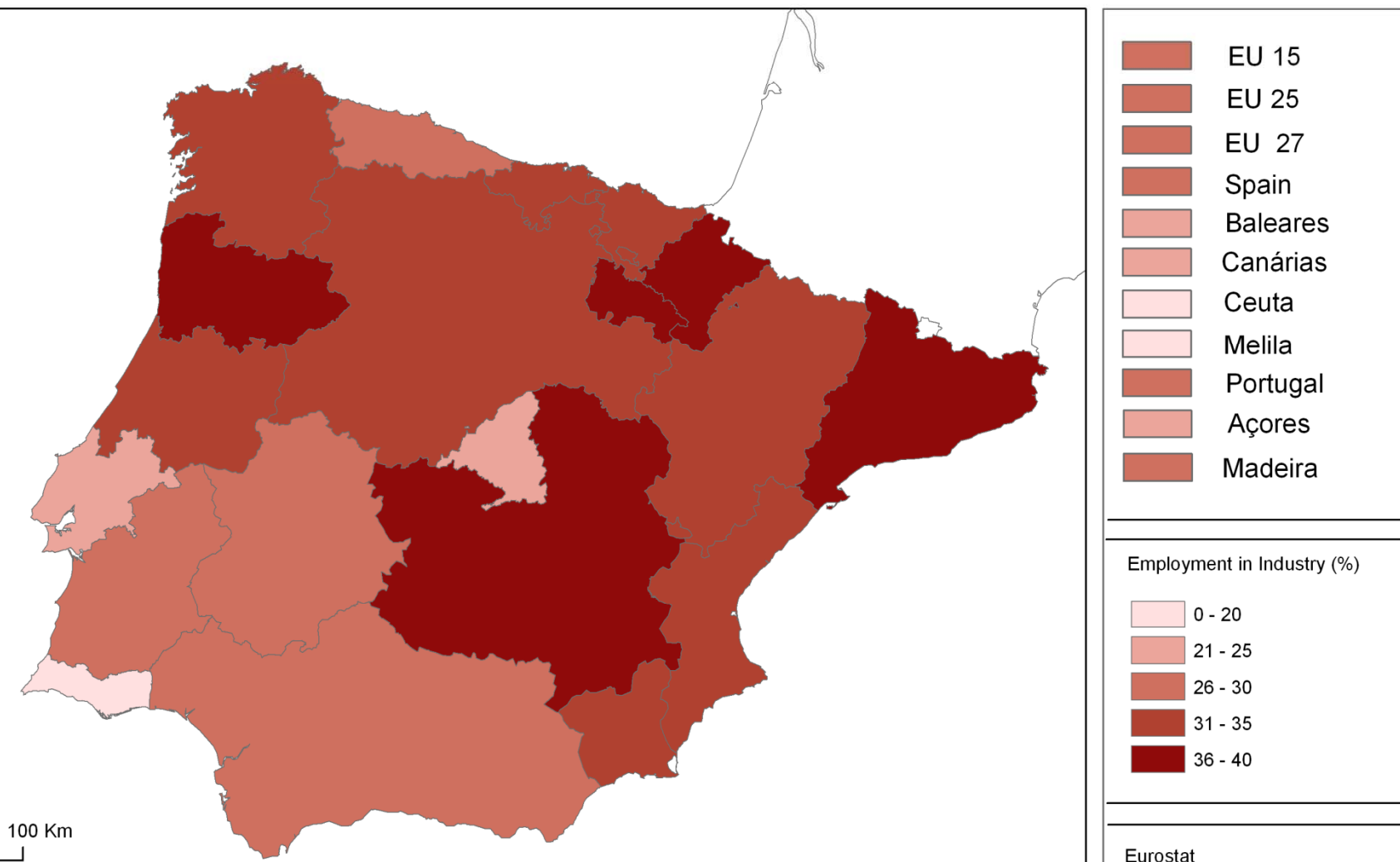


Eurostat

Employment in Industry (Nace c-f) 2006

U.PORTO

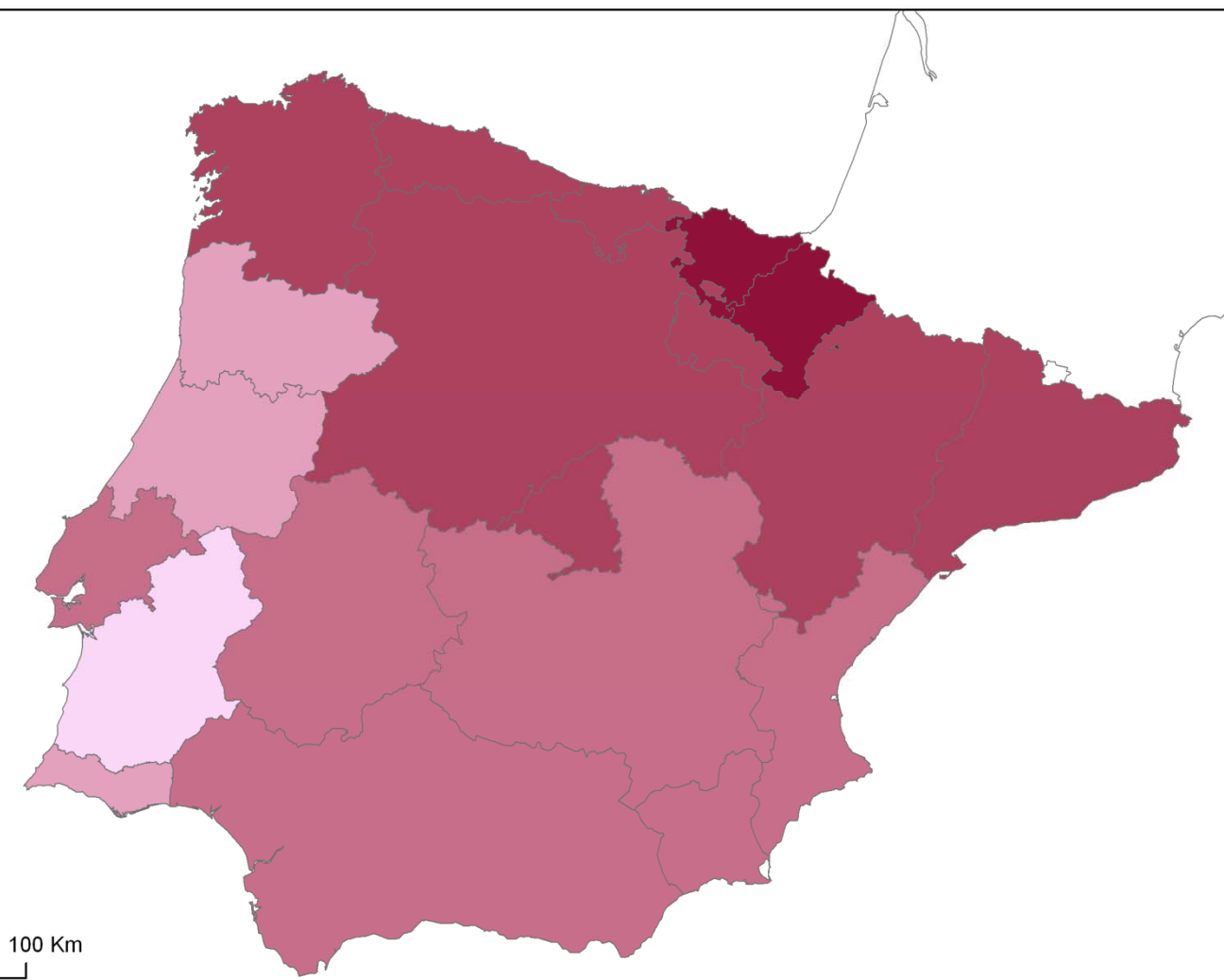
FACULDADE DE LETRAS
UNIVERSIDADE DO PORTO



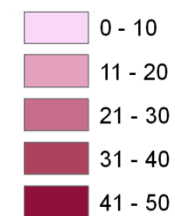
Employment by highest level of education (Tertiary Education) 2006

U.PORTO

FACULDADE DE LETRAS
UNIVERSIDADE DO PORTO



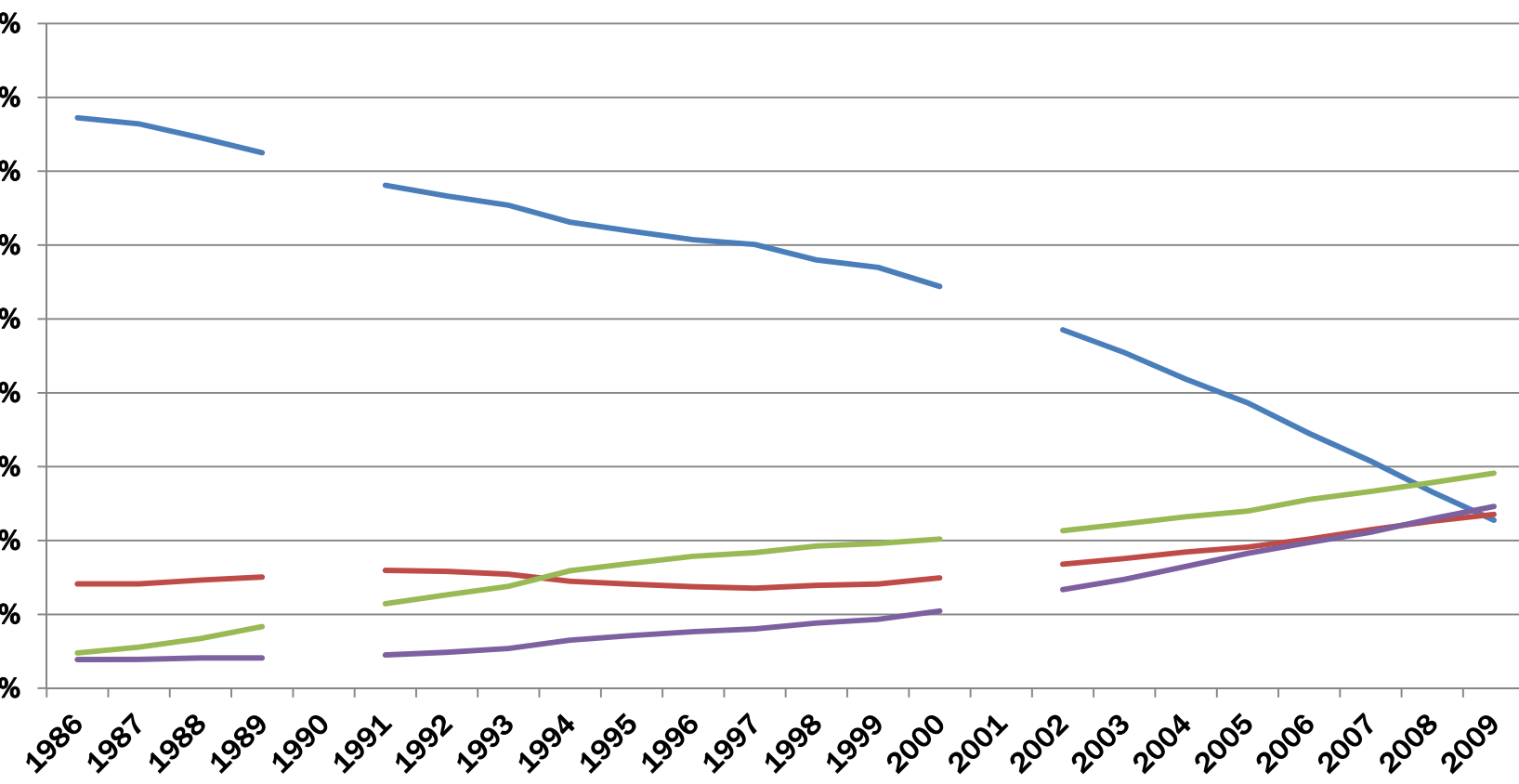
Employment by highest level of education (%)



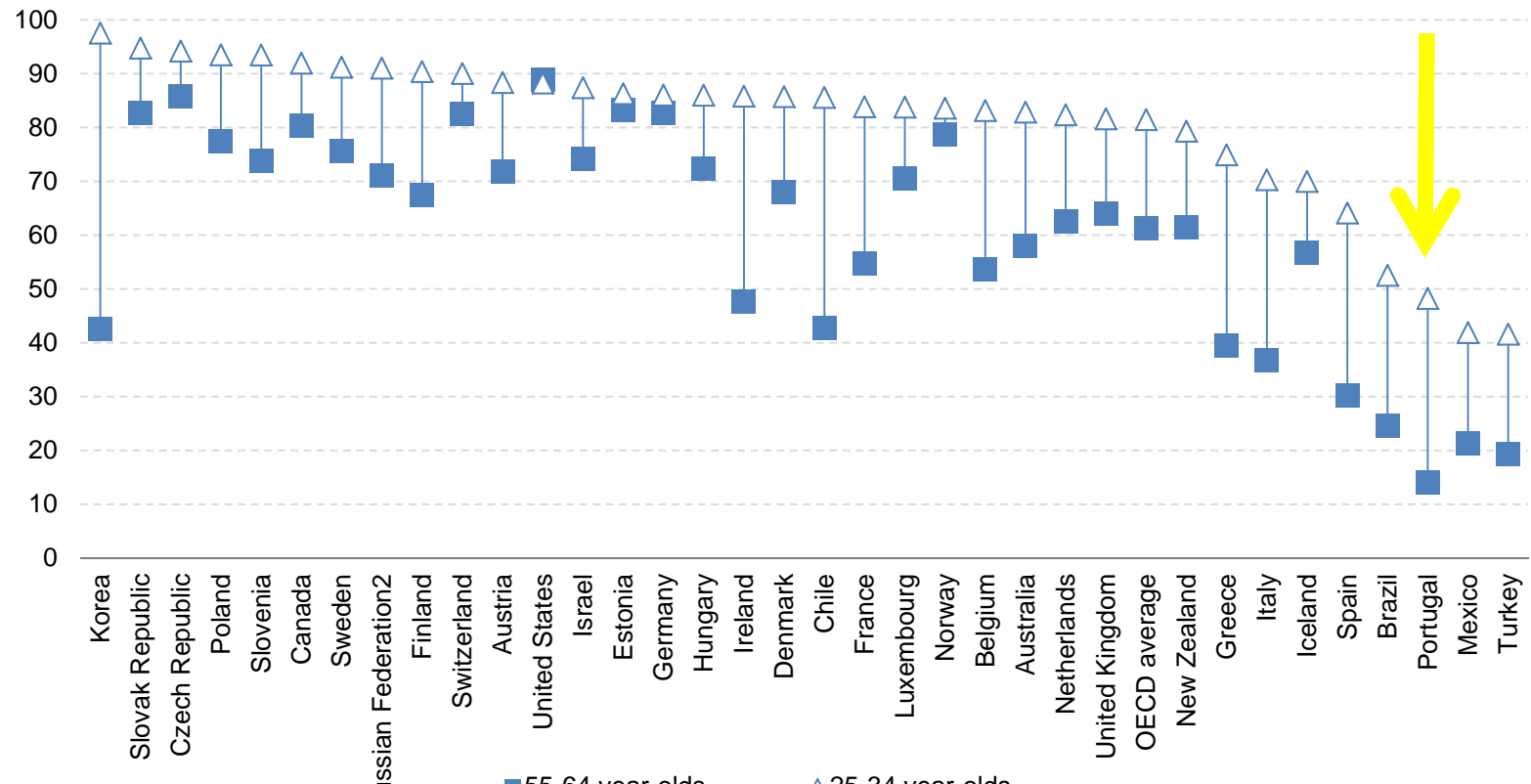
Eurostat

Qualificação da população activa em Portugal

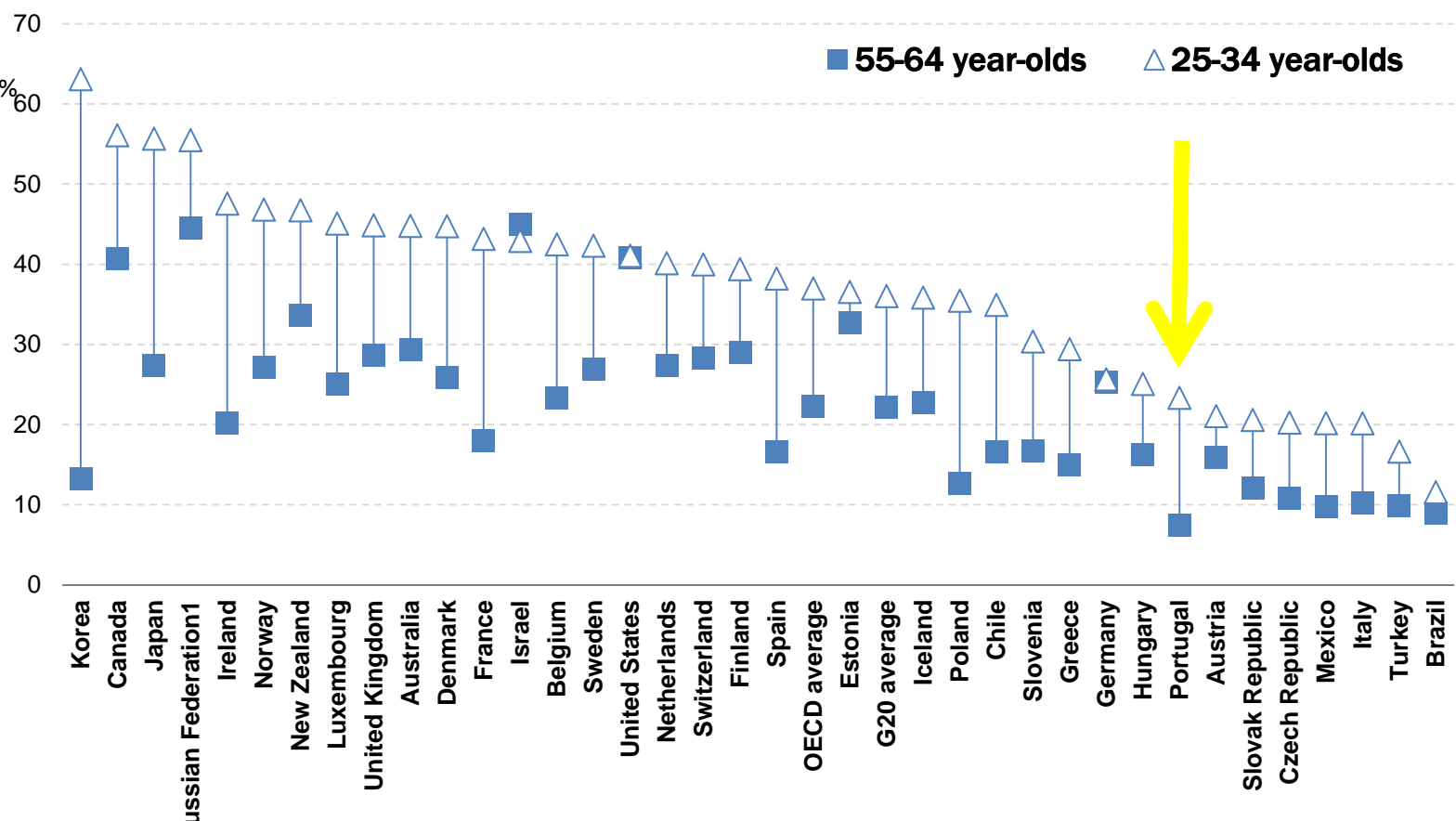
% de trabalhadores com 30 a 35 anos por nível máximo de escolaridade e ano



Percentagem da População que completou Ensino Secundário por Grupo Etário (2009)



Percentagem da População que completou Ensino Superior por Grupo Etário (2009)



Participação em Actividades de Educação (Formal e Não-Formal)

(Fonte – OCDE, 2010)

